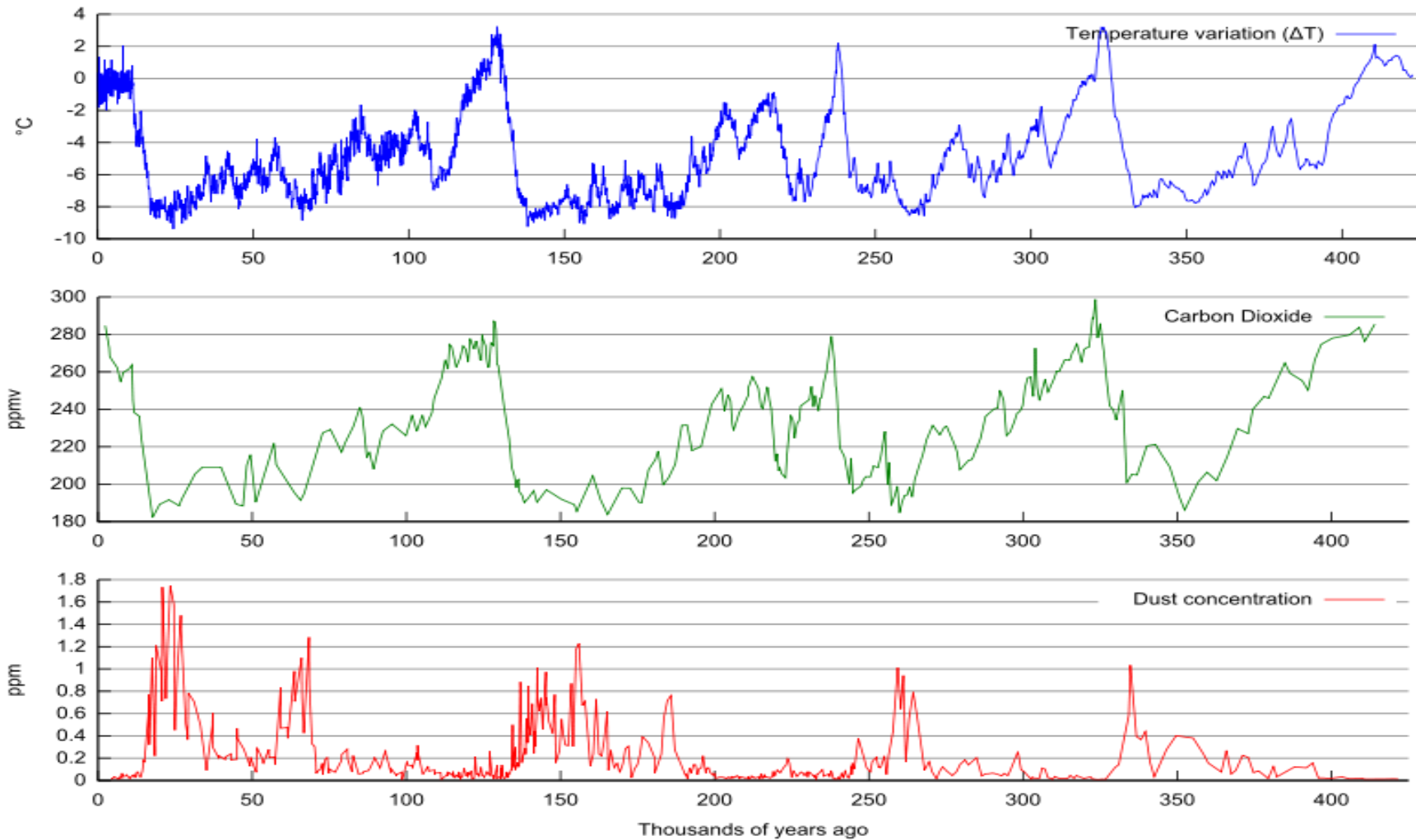


CLIMATE CHANGE
Vostok Graphs



Graphs show temperature proxies, carbon dioxide concentrations, and dust content of Vostok ice core data. Downloaded from Wikipedia article "Climate Change" on 02/11/2012. Although the scale of the graphs makes the temperature and the carbon-dioxide concentrations appear contemporaneous, the Vostok data itself shows that the carbon-dioxide increases lag behind the temperature increases by an average of 800 years.